

SPARE PARTS LIST

FOR CORRECT SPARE PARTS ORDER IT IS NECESSARY TO SPECIFY: TABLE NUMBER, REFERENCE, PART NUMBER, DESCRIPTION AND QUANTITY OF PARTS REQUIRED.

ITEMS DESCRIBED AS R.H. AND L.H. ARE MEANT FACING REAR OF MACHINE.

TABLE NO. 920078

40

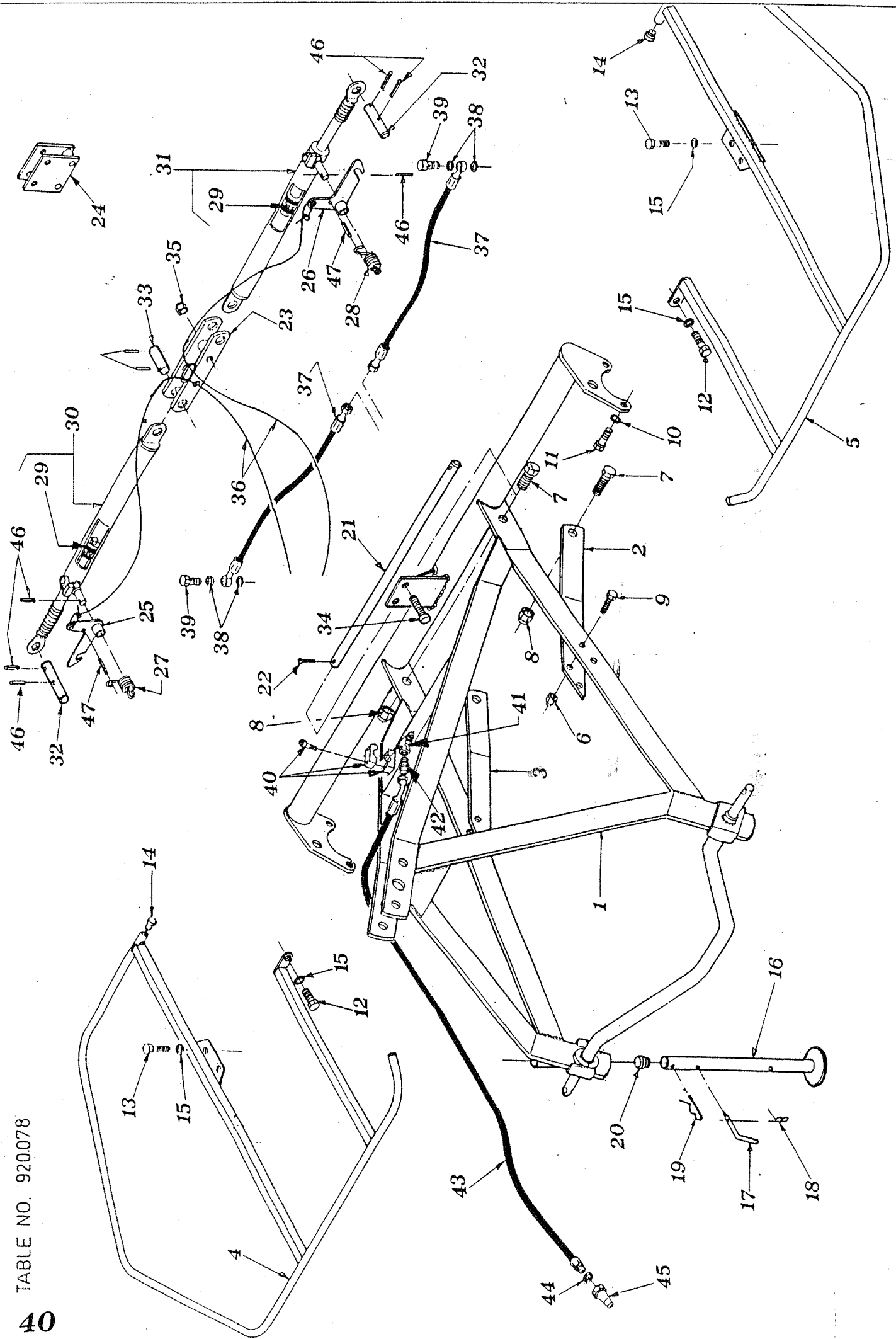


TABLE NO. 920.078

ST/ 384 ST 520 - 3RD POINT HITCH -HYDRO

ITEM	ST384 Q.ty	ST520 Q.ty	PART NO	DESCRIPTION	NOTE
1	1	-	210.041	3RD POINT HITCH	ST/384
1	-	1	210.040	3RD POINT HITCH	ST/520
2	1	-	200.425	LH TIE ROD	ST/384
2	-	1	200.426	LH TIE ROD	ST/520
3	1	-	200.428	RH TIE ROD	ST/384
3	-	1	200.429	RH TIE ROD	ST/520
4	1	-	210.078	RH LATERAL GUARD	ST/384
4	-	1	210.074	RH LATERAL GUARD	ST/520
5	1	-	210.079	LH LATERAL GUARD	ST/384
5	-	1	210.075	LH LATERAL GUARD	ST/520
6	4	4	600.077	NUT	
7	2	2	600.578	SCREW	
8	2	2	600.240	NUT	
9	4	4	600.443	SCREW	
10	4	4	600.633	WASHER	
11	4	4	600.442	SCREW	
12	2	2	600.770	SCREW	
13	4	4	600.441	SCREW	
14	4	4	600.854	PLUG	
15	6	6	600.634	WASHER	
16	1	-	210.026	STAND	ST/384
16	-	1	210.064	STAND	ST/520
17	1	1	200.328	PIN	
18	1	1	600.019	PIN	
19	1	1	600.020	PIN	
20	1	1	200.309	PLUG	
21	1	-	200.430	PIN	ST/384
21	-	1	200.431	PIN	ST/520
22	2	2	600.112	SPLIT PIN	
23	-	1	200.859	HITCH	ST/520
24	1	-	210.010	HITCH	ST/384
25	1	1	210.098	RH COUPLER	
26	1	1	210.099	LH COUPLER	
27	1	1	210.093	RH SPRING	
28	1	1	210.094	LH SPRING	
29*	2	2	600.895	SET OF GASKET	
30	1	1	210.091	RH CYLINDER	
31	1	1	210.092	LH CYLINDER	
32	2	2	210.103	PIN	
33	2	2	200.860	PIN	
34	2	2	600.826	SCREW	
35	2	2	600.077	NUT	
36	1	1	210.009	ROPE	
37*	2	2	600.821	HOSE	
38*	4	4	600.819	COPPER WASHER	
39*	2	2	600.820	SCREW	
40*	1	1	600.822	PIPE STOP, COMPLETE	
41*	1	1	600.880	UNION TEE	
42*	1	1	600.883	NIPPLES	
43*	1	1	600.882	HOSE	
44*	1	1	600.269	COPPER WASHER	
45*	1	1	600.273	QUICK COUPLING	
46	10	10	600.538	PIN	
47	2	2	600.773	PIN	
*	1	1	210.018	HYDRAULIC COMPLETE KIT	

TABLE NO. 920.018
ST 384-H/ST520-H

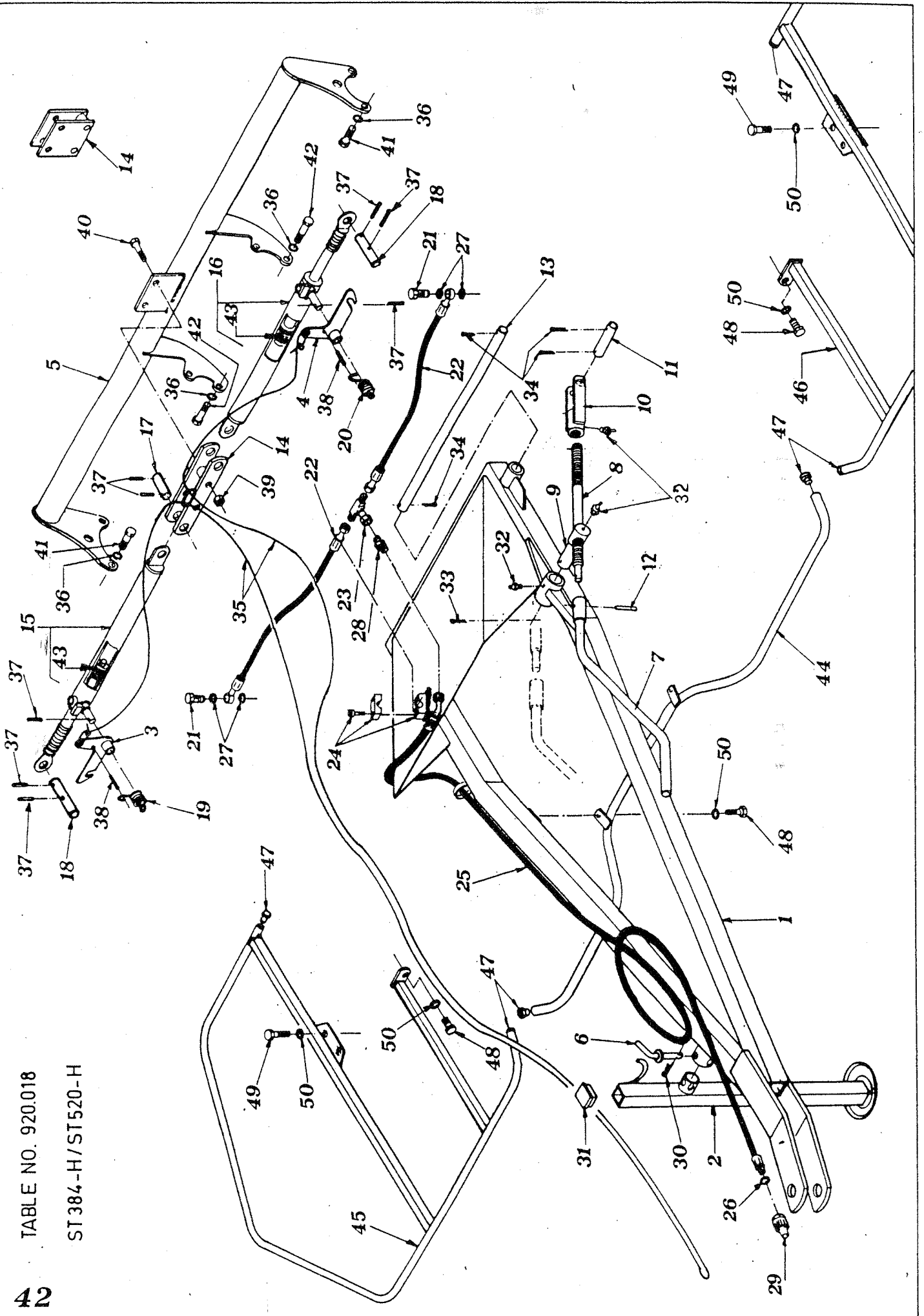


TABLE NO. 920.018					
ST/ 384 ST 520 - PULL TYPE					
ITEM	ST384 Q.ty	ST520 Q.ty	PART NO	DESCRIPTION	NOTE
1	1	-	210.034	DRAWBAR	ST/384
1	1	1	210.033	DRAWBAR	ST/520
2	1	1	200.946	STAND	
3	1	1	210.098	RH COUPLER	
4	1	1	210.099	LH COUPLER	
5	1	-	210.283	REINFORCEMENT,REAR	ST/384
5	-	1	210.305	REINFORCEMENT,REAR	ST/520
6	1	1	200.959	PIN	
7	1	1	200.438	HANDLE	
8	1	1	200.766	TIEROD	
9	1	1	200.768	PIN	
10	1	1	200.769	FORK	
11	1	1	200.442	PIN	
12	1	1	600.580	PIN	
13	1	-	210.319	PIN	ST/384
13	-	1	200.445	PIN	ST/520
14	1	-	210.010	HITCH	ST/384
14	-	1	200.859	HITCH	ST/520
15	1	1	210.091	RH CYLINDER	
16	1	1	210.092	LH CYLINDER	
17	2	2	200.860	PIN	
18	2	2	210.103	PIN	
19	1	1	210.093	RH SPRING	
20	1	1	210.094	LH SPRING	
21*	2	2	600.820	SCREW	
22*	2	2	600.821	PIPE	
23*	1	1	600.880	UNION TEE	
24*	1	1	600.822	PIPE STOP,COMPLETE	
25*	1	1	600.894	PIPE	
26*	1	1	600.269	COPPER WASHER	
27*	4	4	600.819	COPPER WASHER	
28*	1	1	600.883	NIPPLES	
29*	1	1	600.273	QUICK COUPLING	
30	1	1	600.019	PIN	
31	1	1	600.817	PLUG	
32	3	3	600.124	GREASE NIPPLE	
33	1	1	600.548	SPLIT PIN	
34	4	4	600.112	SPLIT PIN	
35	1	1	210.009	ROPE	
36	8	8	600.633	WASHER	
37	10	10	600.538	PIN	
38	2	2	600.773	PIN	
39	2	2	600.077	NUT	
40	2	2	600.826	SCREW	
41	6	6	600.442	SCREW	
42	4	4	600.153	SCREW	
43	1	1	600.895	SET OF GASKET	
44	1	-	200.960	GUARD	ST/384
44	-	1	200.958	GUARD	ST/520
45	1	-	210.078	RH LATERAL GUARD	ST/384
45	-	1	210.074	RH LATERAL GUARD	ST/520
46	1	-	210.079	LH LATERAL GUARD	ST/384
46	-	1	210.075	LH L,ATERAL GUARD	ST/520
47	6	6	600.854	PLUG	
48	4	4	600.770	SCREW	
49	4	4	600.441	SCREW	
50	8	8	600.634	WASHER	
*	1	1	210.090	HYDRAULIC COMPLETE KIT	

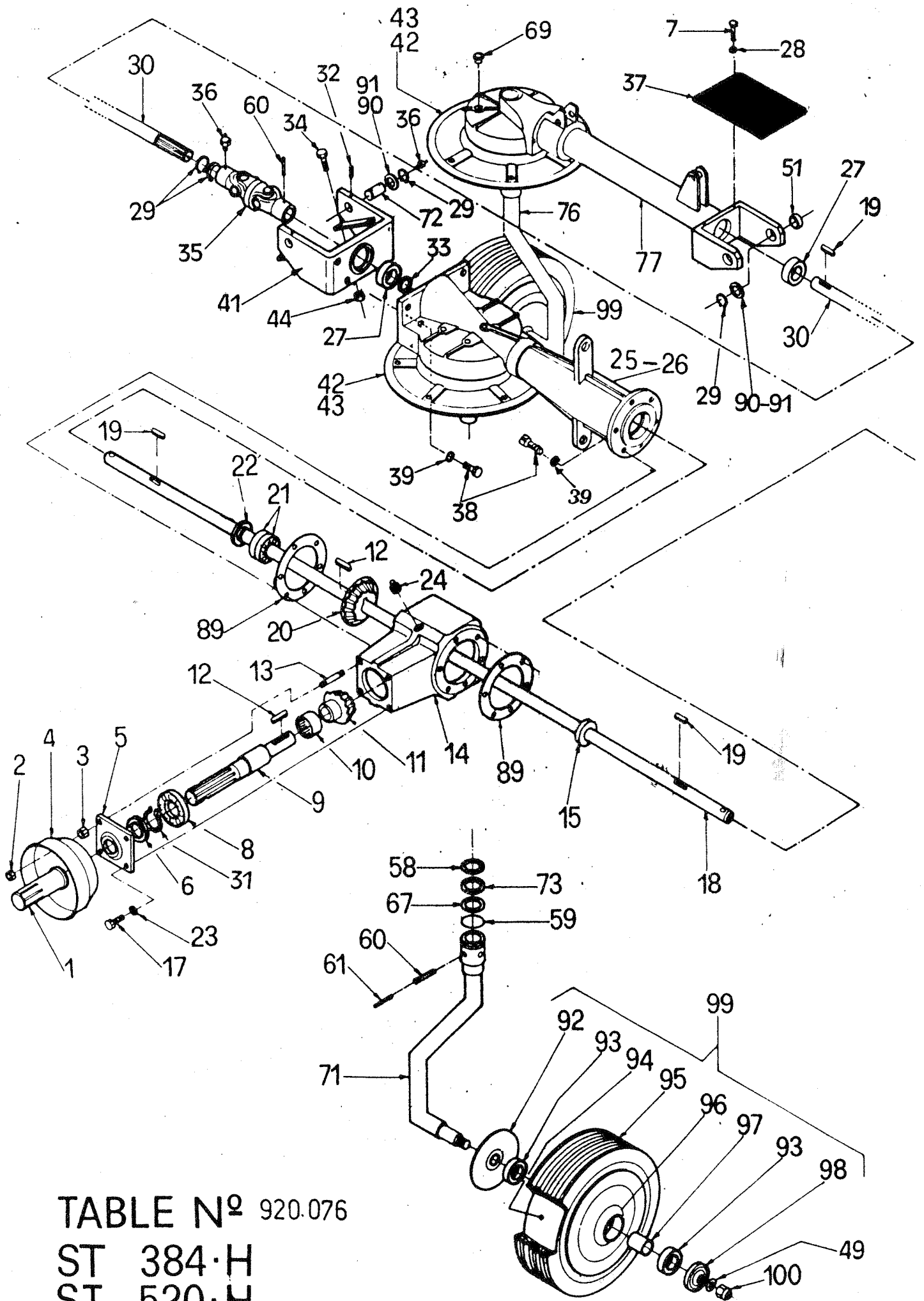


TABLE N^o 920.076

ST 384·H

ST 520·H

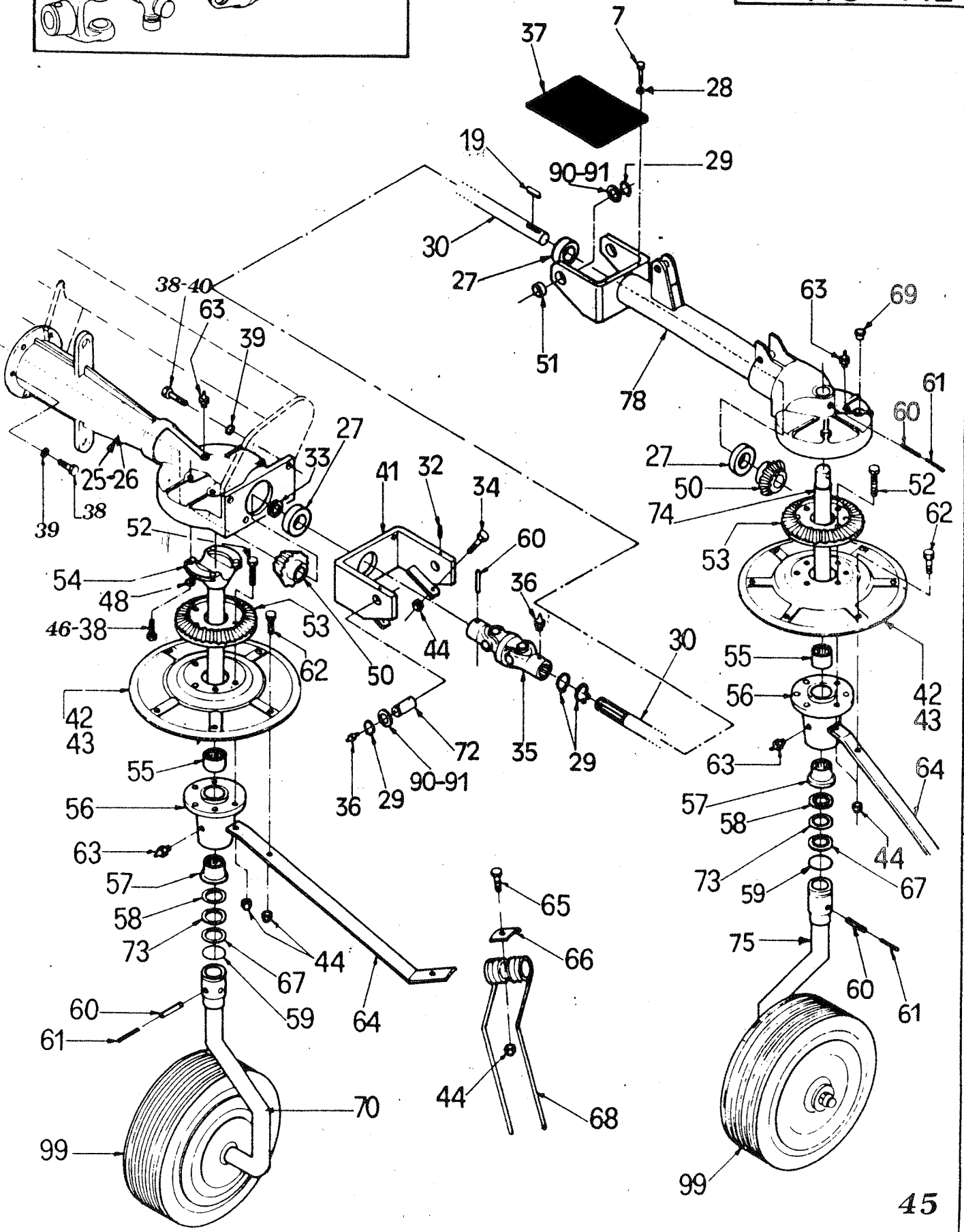
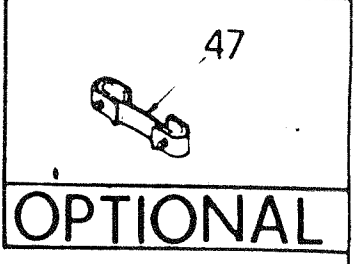
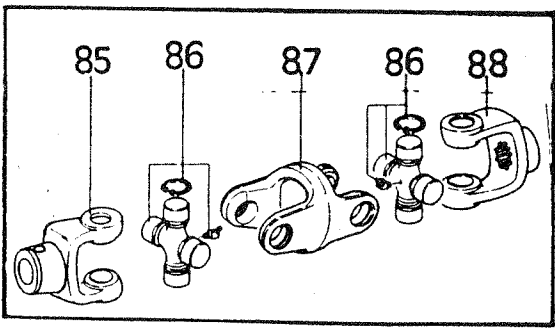


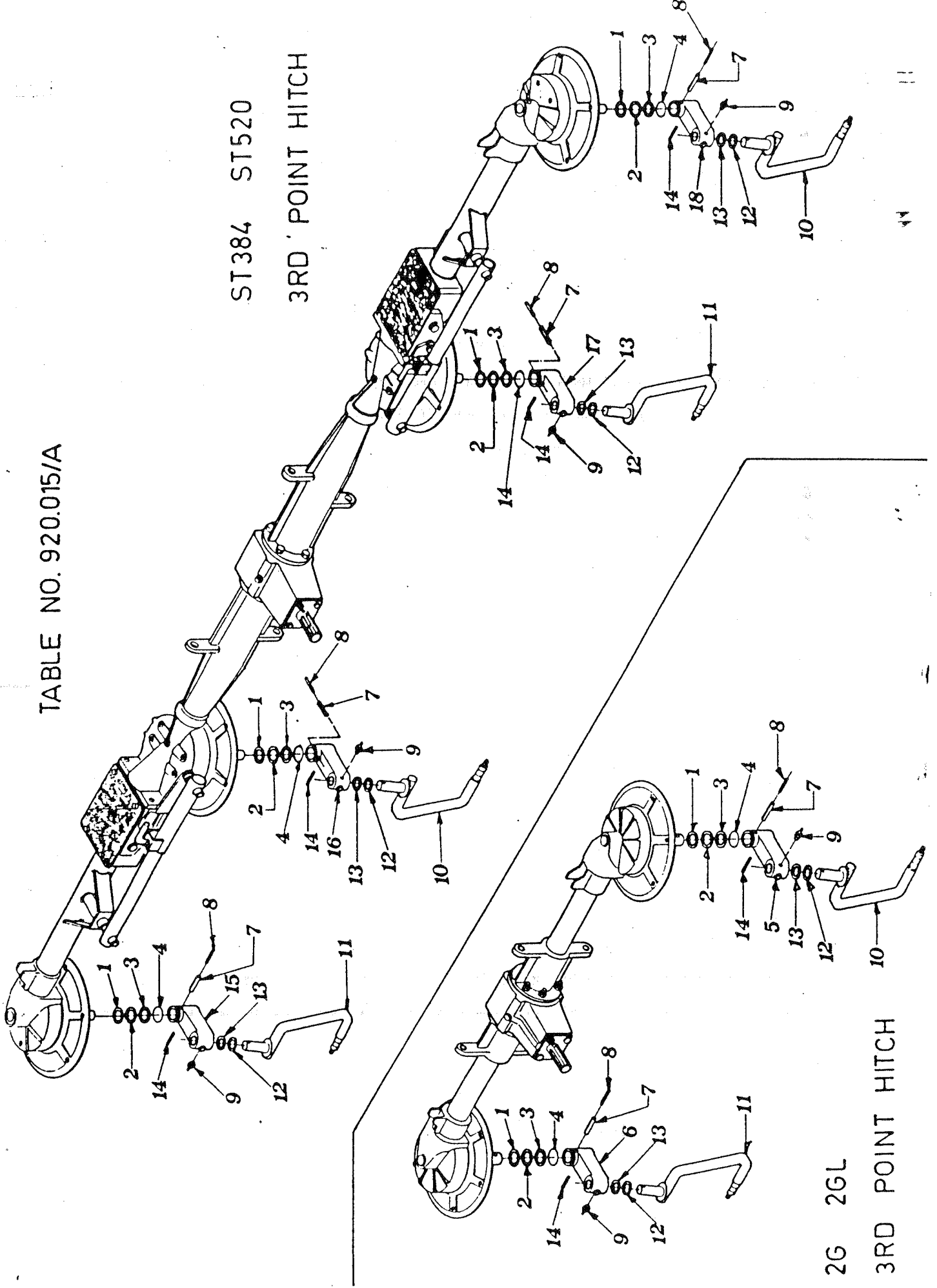
TABLE NO.920.076					
ST384/ST520 HYDRO					
ITEM	ST384 Q.ty	ST520 Q.ty	PART NO	DESCRIPTION	NOTE
1	1	1	600.172	SHAFT GUARD	
2	2	2	600.037	NUT	
3	1	2	600.552	NUT	
4	2	1	600.681	HOOD	
5	1	1	200.395	GEARBOX CAP	
6	1	1	600.555	OIL RETAINER	
7	8	8	600.061	SCREW	
8	1	1	600.327	BEARING	
9	1	1	200.396	SHAFT	
10	1	1	600.557	BEARING	
11	1	1	200.397	SHAFT	
12	2	2	600.556	TAP	
13	2	2	600.558	BOLT	
14	1	1	200.390	GEARBOX	
15	1	1	600.561	OIL RETAINER	
17	2	2	600.222	SCREW	
18	1	-	200.949	DRIVE SHAFT	
18	-	1	200.853	DRIVE SHAFT	
19	4	4	600.559	TAP	
20	1	1	200.400	CROWN	
21	1	2	600.579	BEARING	
22	1	1	600.582	OIL RETAINER	
23	2	2	600.228	SPRING WASHER	
24	2	2	600.560	CAP	
25	-	2	210.056	ROTOR AXLE	
26	2	-	200.452	ROTOR AXLE	
27	6	6	600.609	BEARING	
28	8	8	600.115	WASHER	
29	12	12	600.611	SNAP RING	
30	2	-	200.950/A	LATERAL SHAFT	
30	-	2	200.852/A	LATERAL SHAFT	
31	1	1	600.333	SNAP RING	
32	4	4	600.809	SCREW	
33	2	2	200.851	SHIM	
34	4	4	600.153	SCREW	
35	2	2	200.857	JOINT	
36	6	6	600.124	GREASE NIPPLE	
37	2	2	200.862	GUARD	
38	20	24	600.615	SCREW	
39	20	20	600.633	WASHER	
40	4	4	600.442	SCREW	
41	2	2	200.921	HINGE	
42	-	4	200.408	TINE DISC	
43	4	-	200.466	TINE DISC	
44	52	76	600.077	NUT	
46	4	-	600.004	SCREW	ST/384

TABLE NO.920.076
ST384/ST520 HYDRO

ITEM	ST384 Q.ty	ST520 Q.ty	PART NO	DESCRIPTION	NOTE
47	16	24	200.640	TINE LOCK	OPTIONAL
48	8	8	600.049	WASHER	
49	4	4	600.080	NUT	
50	4	4	200.464	PINION	
51	4	4	600.808	BUSHING	
52	16	24	600.564	SCREW	
53	4	-	200.627	CROWN	
53	-	4	200.470	CROWN	
56	4	-	200.472/A	HUB	
56	-	4	200.410/A	HUB	
57	4	4	600.567	BEARING	
58	4	4	200.411	SHIM	
59	4	4	600.568	GASKET	
60	8	8	600.541	SPRING PIN	
61	6	6	600.562	SPRING PIN	
62	16	24	600.616	SCREW	
63	8	8	600.247	GREASE NIPPLE	
64	16	-	200.473	TINE ARM	
64	-	24	200.403	TINE ARM	
65	16	24	600.688	SCREW	
66	16	24	200.402	PLATE	
67	4	4	200.490	SHIM	
68	16	24	200.401	TINE	
69	4	4	600.896	PLUG	
70	1	1	210.593	L.H. CENTER SUPPORT	
71	1	1	210.592	R.H. CENTER SUPPORT	
72	4	4	200.850	PIN	
73	4	4	200.475	SHIM	
74	2	2	200.407	PIN	
75	1	1	210.591	L.H. LATERAL SUPPORT	
76	1	1	210.590	R.H. LATERAL SUPPORT	
77	1	-	210.006	R.H. SIDE AXLE	
77	-	1	200.922	R.H. SIDE AXLE	
78	1	-	210.007	L.H. SIDE AXLE	
78	-	1	200.928	L.H. SIDE AXLE	
85	2	2	600.813	FORK	
86	4	4	600.814	CROSS, COMPLETE	
87	2	2	600.815	CENTER JOINT	
88	2	2	600.816	SPLINED FORK	
89	2	2	200.405	GASKET	
90	4	4	200.272	SHIM	
91	4	4	200.273	SHIM	
92	4	4	210.596	DUST COVER, INNER	
93	8	8	600.602	BEARING	
94	4	4	610.274	TUBE	
95	4	4	610.275	TIRE	
96	4	4	610.273	RIM	
97	4	4	200.415	SPACER	
98	4	4	200.416	DUST COVER, OUTER	
99	4	4	610.272	TIRE ASSY	
100	4	4	600.080	NUT	

TABLE NO. 920.015/A

ST384 ST520
3RD POINT HITCH

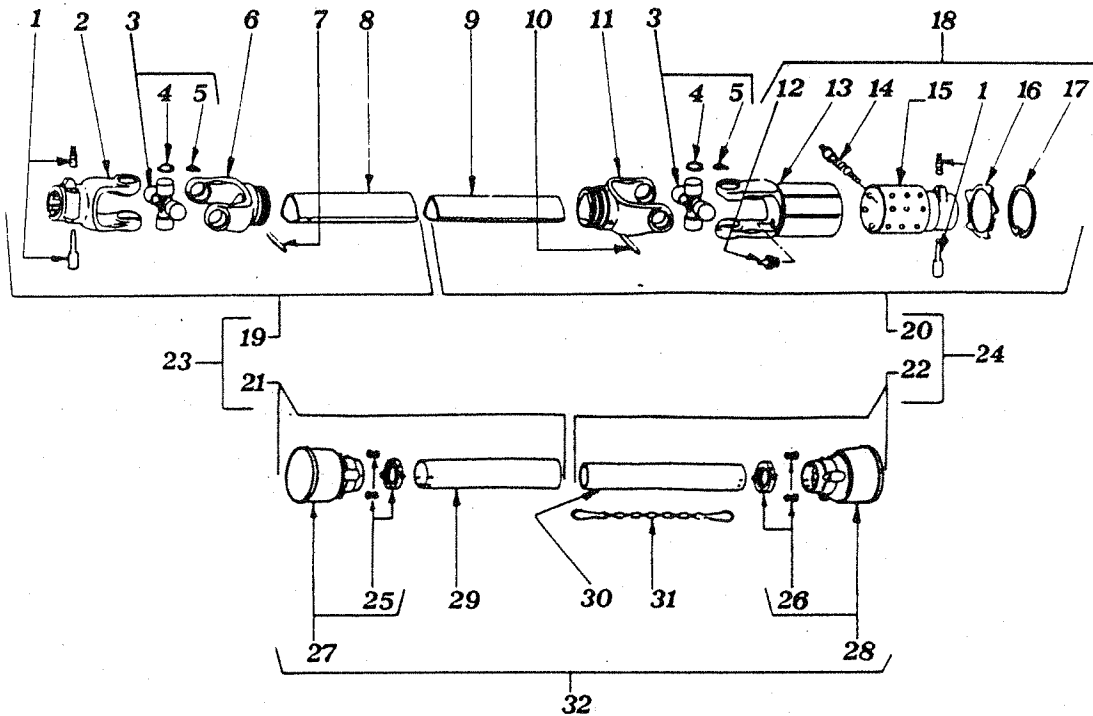


2G 2GL
3RD POINT HITCH

CARDAN SHAFT B3 090E + LW3

PART NO.610.097

ST 384/520 3RD POINT HITCH



CARDAN SHAFT 610.097			
ITEM	PART NO	Q.ty	DESCRIPTION
1	610.057	2	COMPLETE PUSH BUTTON
2	610.071	1	YOKE
3	610.070	2	CROSS JOURNAL ASS.
4	610.205	8	CIRCLIP
5	610.206	2	GREASE NIPPLE
6	610.207	1	OUTER TUBE YOKE
7	610.208	1	FLEXIBLE PIN
8	610.209	1	CM. CARDAN TUBE
9	610.210	1	CM. CARDAN TUBE
10	610.211	1	FLEXIBLE PIN
11	610.212	1	INNER TUBE YOKE
12	610.216	1	GREASE NIPPLE
13	610.217	1	OUTER CASING WITH YOKE
14	610.218	24	RATCHET TOOTH
15	610.219	1	HUB
16	610.220	1	REATING WASHER
17	610.221	1	CIRCLIP
18	610.213	1	TORQUE LW3
19	610.341	1	HALF SHAFT (WITHOUT GUARD)
20	610.342	1	HALF SHAFT (WITHOUT GUARD)
21	610.082	1	HALF SAFETY GUARD
22	610.083	1	HALF SAFETY GUARD
23	610.426	1	HALF SHAFT (WITH GUARD)
24	610.427	1	HALF SHAFT (WITH GUARD)
25	610.078	1	O. BEARING
26	610.079	1	I. BEARING
27	610.080	1	O. BASIC CONE
28	610.081	1	I. BASIC CONE
29	610.338	1	CM. SAFETY TUBE
30	610.339	1	CM. SAFETY TUBE
31	610.068	1	CHaine
32	610.086	1	SAFETY GUARD

TABLE NO.920.015/A

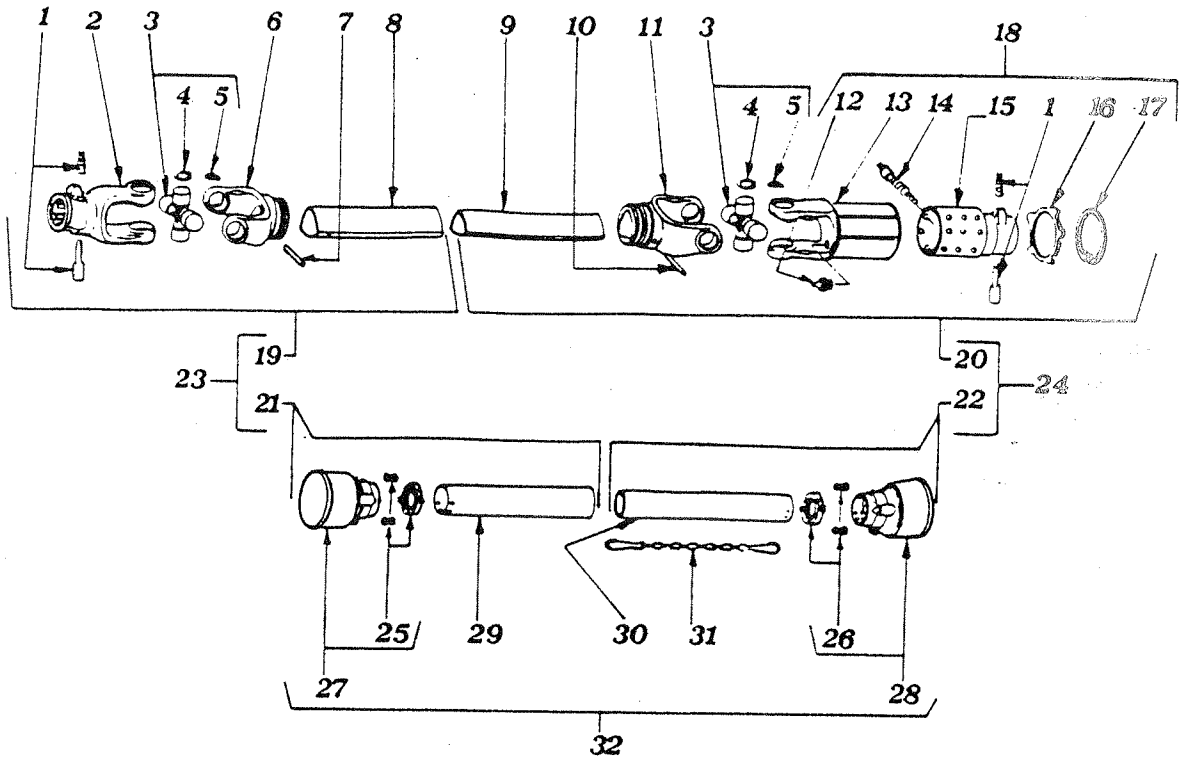
2/G 2/GL ST/384 ST/520 3RD POINT HITCH(WHEEL BRACKET)

ITEM	2G/2GL	ST384-520	PART NO	DESCRIPTION	NOTE
	Q.ty	Q.ty			
1	2	4	200.411	SHIM	
2	2	4	200.475	SHIM	
2	2	4	200.419	SHIM	
3	2	4	200.490	SHIM	
4	2	4	600.568	GASKET	
5	1	*	200.468	SUPPORT,L.H.	2G-2GL
6	1	*	200.467	SUPPORT,R.H.	2G-2GL
7	2	4	600.541	SPRING PIN	
8	2	4	600.562	SPRING PIN	
9	2	4	600.124	GREASE NIPPLE	
10	1	*	210.632	L.H. TIRE BRACKET	2G-2GL
10	*	2	210.632	L.H. TIRE BRACKET	ST/384-520
11	1	*	210.631	R.H. TIRE BRACKET	2G-2GL
11	*	2	210.631-	R.H. TIRE BRACKET	ST/384-520
12	2	4	200.273	SHIM	
13	2	4	200.272	SHIM	
14	2	4	600.539	SPRING PIN	
15	*	1	200.417/1	R.H. LATERAL SUPPORT	ST/384-520
16	*	1	200.417	R.H. CENTER SUPPORT	ST/384-520
17	*	1	200.418	L.H. CENTER SUPPORT	ST/384-520
18	*	1	200.418/1	L.H. LATERAL SUPPORT	ST/384-520

CARDAN SHAFT B3 130E + LW3

PART NO. 610.096

ST/384-ST/520 PULL TYPE



CARDAN SHAFT 610.096				
ITEM	PART NO	Q.ty	DESCRIPTION	
1	610.057	2	COMPLETE PUSH BUTTON	
2	610.071	1	YOKE	
3	610.070	2	CROSS JOURNAL ASS.	
4	610.205	8	CIRCLIP	
5	610.206	2	GREASE NIPPLE	
6	610.207	1	OUTER TUBE YOKE	
7	610.208	1	FLEXIBLE PIN	
8	610.209	1	CM. CARDAN TUBE	
9	610.210	1	CM. CARDAN TUBE	
10	610.211	1	FLEXIBLE PIN	
11	610.212	1	INNER TUBE YOKE	
12	610.216	1	GREASE NIPPLE	
13	610.217	1	OUTER CASING WITH YOKE	
14	610.218	24	RATCHET TOOTH	
15	610.219	1	HUB	
16	610.220	1	REATING WASHER	
17	610.221	1	CIRCLIP	
18	610.213	1	TORQUE LW3	
19	610.222	1	HALF SHAFT (WITHOUT GUARD)	
20	610.223	1	HALF SHAFT (WITHOUT GUARD)	
21	610.226	1	HALF SAFETY GUARD	
22	610.227	1	HALF SAFETY GUARD	
23	610.224	1	HALF SHAFT (WITH GUARD)	
24	610.225	1	HALF SHAFT (WITH GUARD)	
25	610.078	1	O. BEARING	
26	610.079	1	I. BEARING	
27	610.080	1	O. BASIC CONE	
28	610.081	1	I. BASIC CONE	
29	610.214	1	CM. SAFETY TUBE	
30	610.215	1	CM. SAFETY TUBE	
31	610.068	1	CHAINE	
32	610.228	1	SAFETY GUARD	



AGRICULTURAL MACHINERY
sitrex[®] s.r.l.

Zona Industriale-Via L. Paciolini,22
06018 TRESTINA-(Perugia)-ITALY
Tel.(075)8540021-Telefax (075)8540523

